

---

# Timber Structures as Identified in the Early Epigraphs from Sri Lanka

*Malini Dias*

## *Chapter 3*

*Fig. 1. Ruvanvalisaya - Hatthi - Vedi*

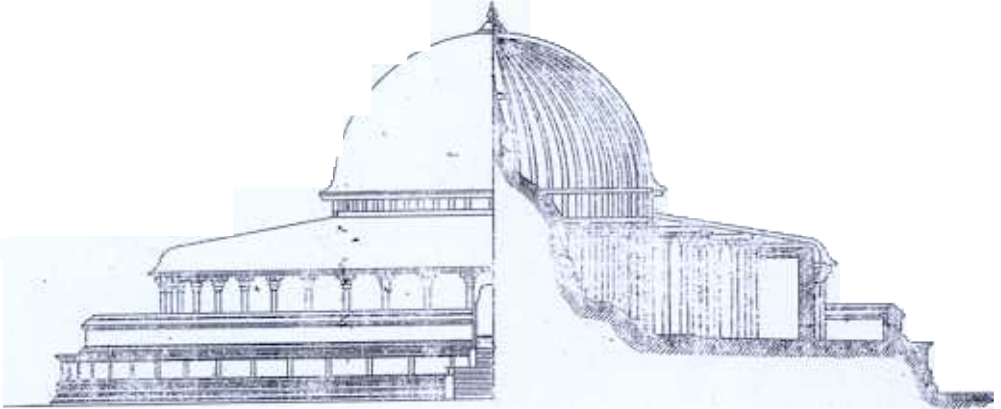
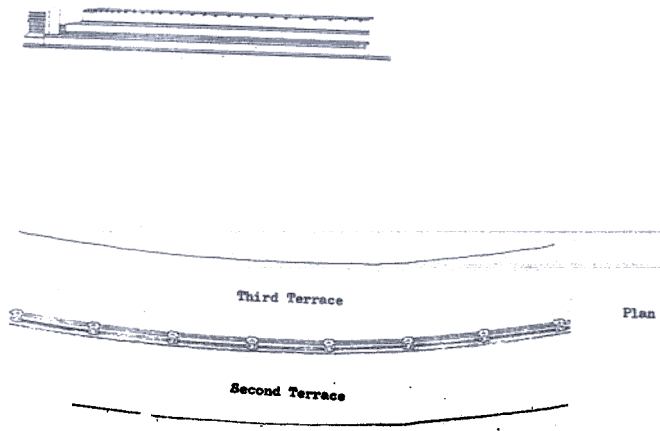
*Fig. 2. Conjectural Roof of Thuparama (after Paranavithana)*

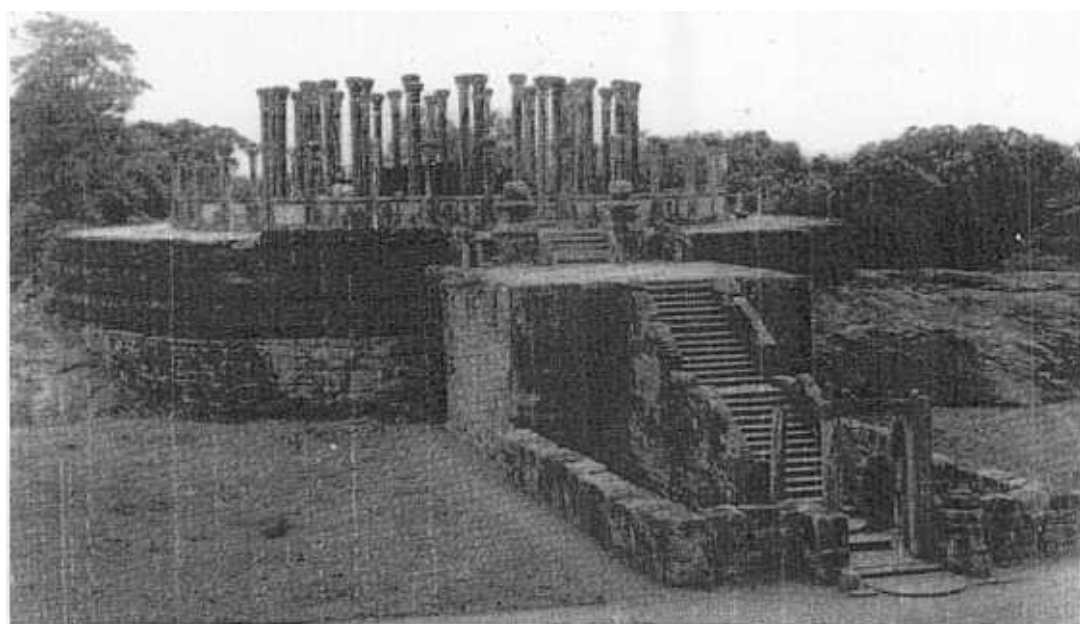
*Fig. 3. Madirigiri Vatadage*

*Fig. 4. Ruvanvali Seya*

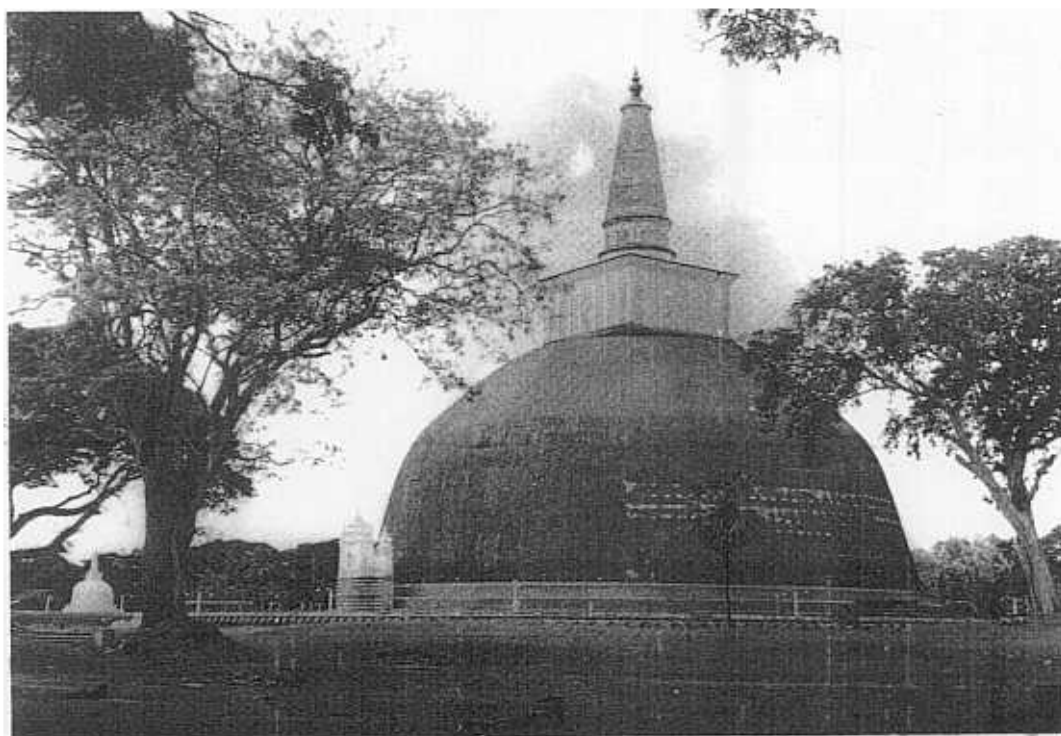
*Fig. 5. Lohapasada*

Elevation

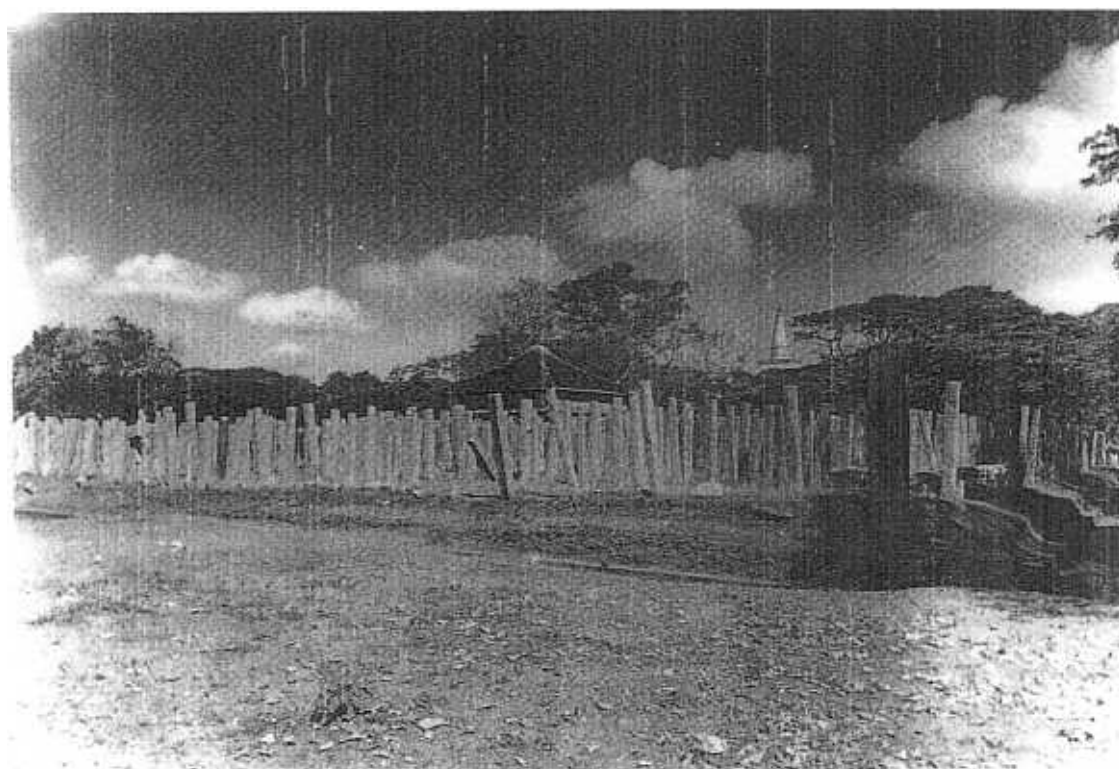




*Fig.*



*Fig. 4.*



*Fig*