

Vernacular Architecture in Guatemala

Blanca Niño

Fig. 1. Altiplano, Guatemala

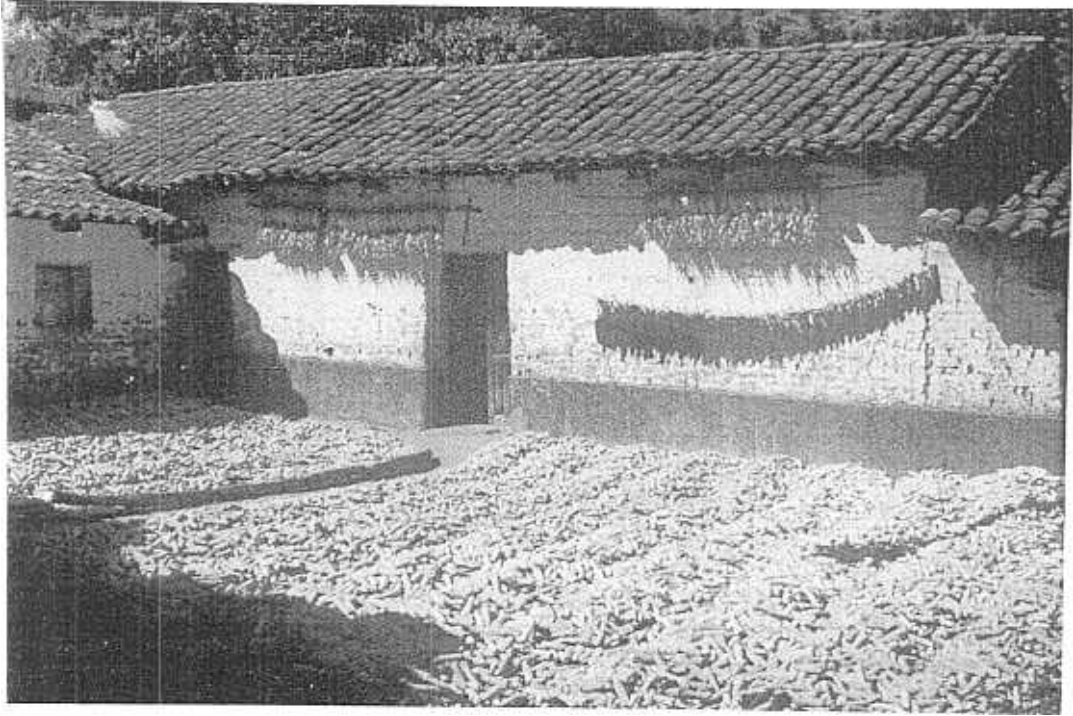
Fig. 2. Techo de Teuas

Fig. 3. Capilla Posa, Santiago Atitlán, Guatemala

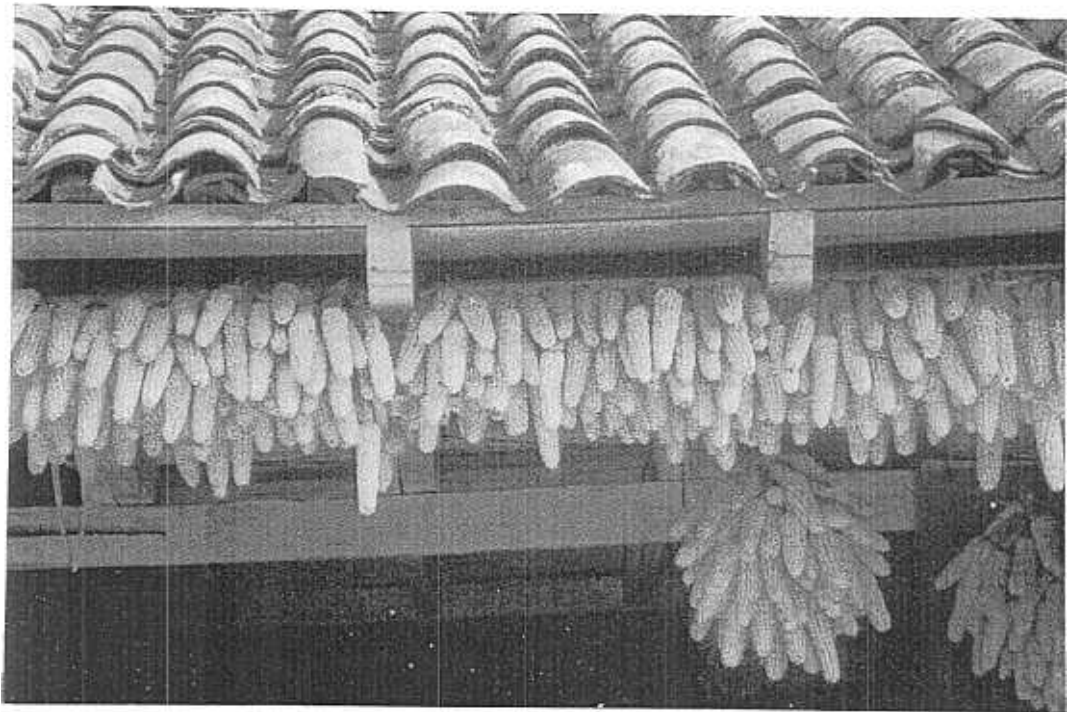
Fig. 4. Santiago Atitlan, Guatemala

Fig. 5. San Andrés Xewl, Guatemala

Fig. 6. Chichicatenango, Guatemala



Fig



Fig

