

# POLLEN

ICOMOS CANADA

Historic Gardens and Landscapes Committee

Comité des jardins et paysages historiques

## Traveller's Journal

Vol. 2 No. 2 November 1989

### Gardens in Québec

For years the Reford gardens at Métis had beckoned like a talisman. It seemed hard to believe that gardens as a southern Ontarian knew them could possibly exist that far north up the St. Lawrence River. Could they possibly be better than the Butchart, as had been said? There was only one way to find out. Go there and take in as many gardens as could be found.

With the help of Québec gardeners a nine day July tour was planned to include Montréal, Knowlton, Québec City, La Malbaie, Métis and, on the way home, Hudson, Québec. To break the long drive to Montréal a stop was arranged to visit Bellevue House National Historic Park in Kingston, and Evergreen Farm in Kemptville.

Bellevue's gardens do not strictly represent the period of occupancy of Sir John A. Macdonald i.e. 1848-9. They were restored to a later period. The vegetable garden, for example, is quite extensive. The site is attractive and interesting. Evergreen Farm, featured on PBS TV, has a series of excellent gardens, well planned and lush and containing some interesting and practical variations on design and practice.

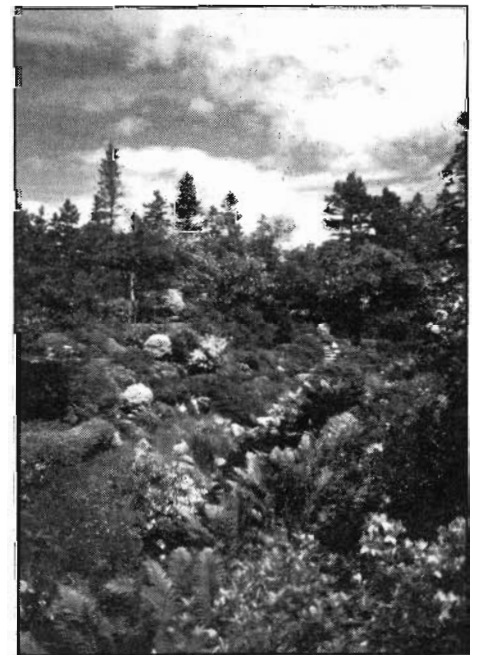
The Jardin botanique, Montréal, has a wonderful variety of gardens. These gardens are beautifully maintained despite the thousands of visitors. The rose garden, shade garden, shrubberies, heath garden, alpines, arboretum and greenhouses all had good collections and plenty of bloom. The new Japanese garden is attractively designed and will seem more

integrated in a year or two. For the admirer of flowering perennials there is an excellent collection of common and uncommon varieties.

Gardens in Québec's Eastern Townships seem to benefit from protective hills, deep snow and their owners' love of gardening and hard work. An invitation to participate in a summer tour was a rare opportunity to see six contemporary gardens all fascinating in their variety of plants, design and maturity.

Every garden has its own individual beauty and charm but there is always one that is most memorable. Perhaps it was the first of a series, perhaps the light was just right, perhaps one colour had particular appeal. For this tour that garden was Eve Lambert's. Just eleven years old, the garden is built on the side of a hill with huge granite outcroppings to interrupt, or rather, be included in the design. On that brilliant July morning it was a picture of gold and deep blue with dashes of orange, white, rose and red. Miss Lambert has been most ingenious and artistic with her design, creating flower beds over and around and under the rocks so that all the elements, rocks, shrubs, trees and flowers, seem to complement each other. The plants themselves form a fascinating collection, many are grown from seed ordered from around the world.

The University of Laval's Roger Van den Hende Botanic garden in Québec City has much to interest gardeners. Specimen beds of perennials, annuals, vegetables and herbs are neatly laid out and labelled very much in the instructive "Jardins des Plantes"



Jardin de Métis, Québec

Photo credit: Armand Dubé/Ministère du  
Loisir, de la Chasse et de la Pêche

style of France. Some of the tree collections, particularly the maple, are excellent. The rhododendron and heath collection was a glorious surprise in June. Torontonians, who pride themselves in bringing to flower the not-so-hardy rhododendron, would be chagrined to see how the careful maintenance of an evergreen-protected microclimate can ensure magnificent flowering as far north as Québec City.

Bagatelle is the aptly named villa built originally in 1840 and rebuilt, after a fire, in 1927 to the original plans. It is within a few minutes drive

of the Jardins Van den Hende and is well worth a stop. The villa is a delightful grey and white "cottage pittoresque" and has a "jardin anglais" or landscape garden of the Romantic period — in miniature. Hills, views, rockeries, waterfalls, streams and bridges are gathered together in a garden less than a quarter acre in size.

There were both formal and informal gardens at Quatre Vents, the gardens of Frank Cabot near Cap à l'Aigle and thousands of words could hardly do justice to the variety of plants, the design, the imagination and creativity found here. The first terraces, lawns, pool, Rose garden and White garden were designed and built in the late 1920s and early 1930s. The gardens appear to have dreamed quietly in the sun until the late seventies and eighties when the present owners developed the wonderful shade border, stream garden, perennial allée, woodland garden and many more. In July the gardens were vivid with delphinium, lilies, thalictrum, campanula and aconite. Waterlilies gleamed on the water and bergenia, ferns and large-leaved Chinese rhubarb lined the lake. Astilbe, from palest pink to deep red, filled a shady border. White fireweed (*Epilobium augustifolium* v. *alba*) towered beside the red lacquered oriental-style bridge.

Finally, across the St. Lawrence and just outside the village of Métis the Reford gardens were waiting. In 1919 Elsie Meighan Reford inherited her uncle's estate. On it were hundreds of pines and spruce, a wandering little stream from the Métis River and a fishing camp. Eight years later she started planting the gardens and continued until 1954. In 1961 the Québec government acquired the property and began to restore the gardens which, after Lady Reford's death, had been "left to nature's capriciousness".

"I hope you won't be disappointed," warned a fellow gardener. "I've heard they are not as beautiful now that they are in government hands." It was hard to imagine how they could have been better.

Protected from the north and west by heavy stands of evergreens, the cold northern air tempered by the stream and, on two sides, by the St. Lawrence and Métis Rivers, a glorious profusion of plants thrive in a humid microclimate. The gardens are still part of the original spruce forest. Garden visitors walk along paths where native

plantings have been encouraged and enhanced with compatible cultivated varieties. Often the woods open up to reveal bright splashes of colour, on the rockery, for instance, then the trees take over for a tranquil interval before the brilliance of a perennial allée.

All through the gardens, and there are many, these blendings and contrasts continue — native plants with appropriate cultivars and vivid plantings of flowers and shrubs. They exhibit a thoughtfulness and subtlety of design that produce a beautiful harmony. Gaudy plants like asters, phlox, delphiniums, larkspur and yarrow neither dominate nor diminish the softer shades of anemone, aquilegia, dicentra and ferns. Hundreds of varieties fascinate the visitors including, of course, the Gardens' insignia, the blue poppy, *Meconopsis betonicifolia*.

With the successful fulfillment of a long-held dream it was difficult to believe that small gardens in Hudson could hold much interest. But, like playing a Bach Invention as the encore to a Beethoven Piano Concerto, the

five diverse contemporary gardens by the river were a charming contrast. Also, like the Bach Invention, they contained variations that an amateur gardener could play in his or her own modest garden and made the return to that small garden less of a poignant contrast to the glories of Quatre Vents or the Jardin de Métis.

Helen Skinner

---



---

## Conferences

---



---

From May 13 until May 26, 1990, Ann Falkner of Learning Strategies will lead a spring gardens tour of England and Wales. A few of the sites to be visited are: Stourhead, East Lambrooke, Hidcote, Powis Castle, and Stowe. For a complete list of gardens, description and cost of the tour, write: Ann Falkner, Learning Strategies, P.O. Box 2857, Sta. D, Ottawa, Ont. K1P 5W8. (613) 722-3226.



## Pagoda Bridge

Originally designed by well-known Peterborough architect, John Belcher in the 1890s, the Jackson Park "Pagoda" Bridge, Peterborough, Ontario, was a splendid example of Victorian garden architecture. Unfortunately the orientally-inspired bridge was not well maintained and in 1986 it was deemed structurally unsound. Much of the original woodwork was missing or rotten. The local "Preserve the Pagoda"

Committee together with Sir Sandford Fleming Community College undertook the restoration under my firm's direction. The bridge was completely dismantled and what woodwork could not be salvaged was recreated by the Community College students. The bridge was reassembled in the spring of 1989 and officially reopened to the sound of bagpipes on June 15, 1989.

Jon Hobbs

---



---

## Current Site Projects

---



---

### Une communauté à l'avant-garde de la préservation du paysage

Depuis quelques années, les Prêtres de Saint-Sulpice ont entrepris, avec la collaboration du Ministère des Affaires culturelles, la mise en valeur du parterre et des jardins du Grand Séminaire de Montréal, qu'ils ont établi en 1855-59 sur l'ancien site du Domaine de la Montagne, constitué par eux au XVII<sup>e</sup> siècle.

Suivant d'un plan d'ensemble adopté en 1984, les anciens Seigneurs de Montréal ont fait procéder à la restauration des deux tours du Fort de Belmont (1685), à la remontée du mur de clôture le long de la rue Sherbrooke (1870), au rafraîchissement du parterre d'entrée, et à la création d'une place d'interprétation historique.

Pour fêter le cent cinquantième anniversaire de la fondation du Grand Séminaire, les Sulpiciens s'apprentent maintenant à trouver une solution au problème douloureux que cause la dégradation avancée de leur bassin exceptionnel (525 pieds de long) pour lequel un puits d'alimentation vient d'être creusé avec succès.

L'ensemble des travaux se fait sous la direction des architectes Beaupré et Michaud, en collaboration avec le paysagiste Alain Baillargeon.

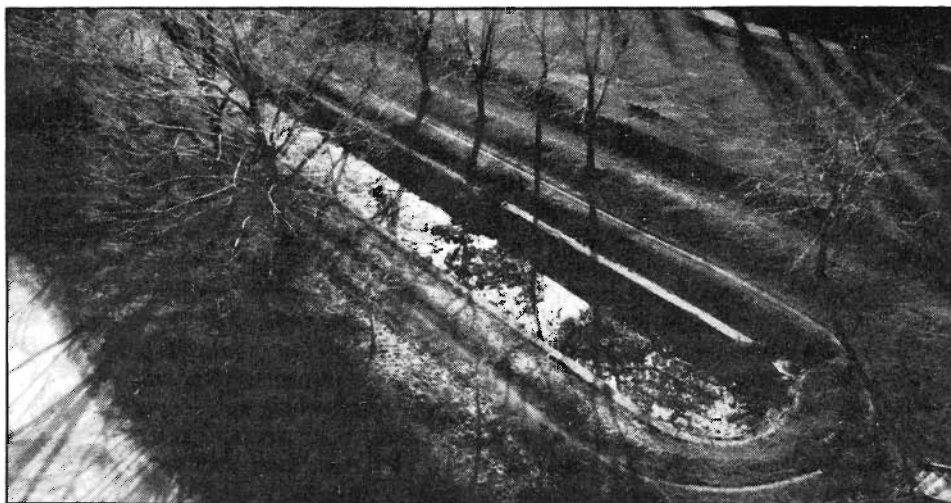
Le rêve des consultants et des clients : faire renaître les vergers et les vignes établis au XVII<sup>e</sup> siècle avant la fin du millénaire.

Josette Michaud

### Update — Parkwood

*Pollen* reported in the March 1989 (Vol. 1, No. 3) issue on the status of Parkwood, the estate of Colonel Robert Samuel McLaughlin, Oshawa, Ontario. Since that time Parkwood has been declared a National Historic Site. The Historic Sites and Monuments Board of Canada recommendation reads:

"Parkwood, the estate of the late Colonel Sam McLaughlin, including the house with its extensive collection



Grand Séminaire de Montréal

Photo credit: Josette Michaud

of period furnishings and decorative art, and its grounds with the formal garden by John Lyle and designs by the prominent landscape architects H.B. and L.A. Dunnington-Grubb, is of national architectural significance and should be commemorated by means of a plaque."

Parkwood adds to the growing number of landscapes in this country which have been recognized as being of national significance. Parkwood's new status as a National Historic Site does not, however, offer it any actual legal protection against potential redevelopment, as this recognition is purely commemorative in nature. *Pollen* will continue to keep you informed on the status of this threatened landscape.

An upcoming issue of *Canadian Horticultural History* will focus on the work of the Dunnington-Grubbs, and will include an article by Robert Hunter entitled "The Design Work of H.B. and L.A. Dunnington-Grubb at Parkwood".

### Halifax Public Gardens

In mid-October of this year the 76-year old Garden Crest Apartments across from the Halifax Public Gardens was registered under Nova Scotia's Heritage Property Act. The Garden Crest Apartments was, prior to this designation, threatened with demolition to make way for a \$33 million condominium project. It was the first luxury apartment building of its kind in Halifax. The Victorian-style structure is considered integral to the character of the Public Gardens. This

is the first time a private property has been registered in Nova Scotia without some form of agreement with the owner prior to the decision.

---



---

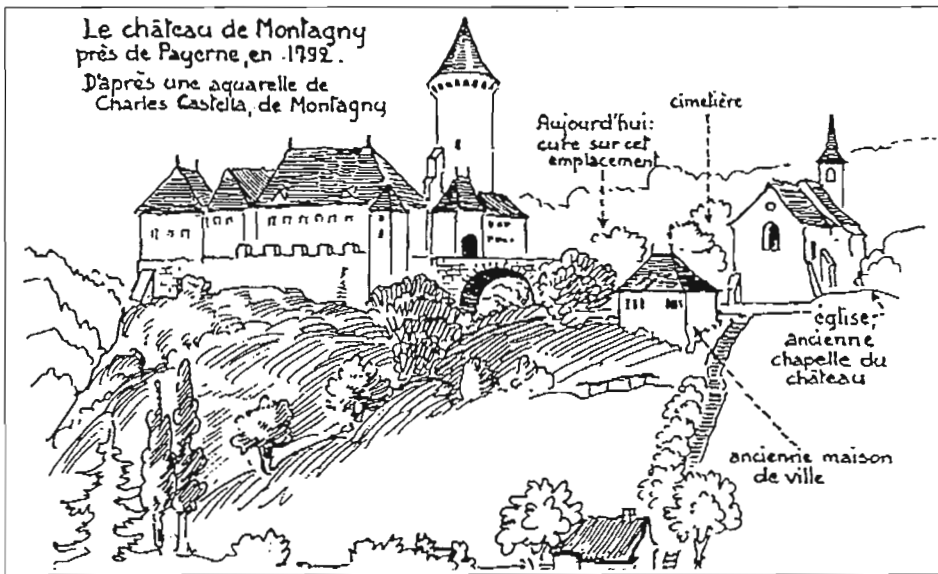
## Education News

---



---

The Centre for the Conservation of Historic Parks and Gardens of the Institute of Advanced Architectural Studies at York University, England will offer a number of new short courses in 1989-1990. These courses are designed for people whose professional work, responsibilities or interest bring them into direct contact with the care and conservation of historic landscapes. In addition to the short courses, the Institute offers an Historic Landscape Option as part of its Master of Arts Course in Conservation Studies. The short courses offered include: Professional Gardening; History of Gardens and Landscape Design in Britain; Conserving and Managing Historic Parks and Gardens; Presenting Historic Sites to the Public; Planting and the Upkeep of Old Gardens; Trees and Woodlands in the Landscape; Protecting the Rural Heritage: Landscapes; Protecting the Rural Heritage: Development Control; Conservation and the Industrial Heritage; and Conservation: Summer Programme. Dates of these courses and other information from the Institute can be had by contacting: The Secretary, IoAAS, The King's Manor, York YO1 2EP England.



## An Archaeological Education

The United Nations Educational, Scientific and Cultural Organization (UNESCO) offered like-minded individuals the opportunity to gather from about the globe to share ideas and experiences while participating in an archaeological expedition. At the same time, the expedition provided an environment in which to "bring about co-operation between people who have neither the same historical background nor the same daily concerns," while assisting a community, with typically limited resources, to reaffirm an integral piece of its history and identity.

The catalyst was provided by the Swiss National Commission for UNESCO which sponsored the International Introductory Course for Archaeological Excavation for Youth, 1989, under the tutelage of the *Service archéologique du Canton de Fribourg*. This course was an opportunity for students (ages 18-28) of fine arts, archaeology or a related field who are interested in the conservation of historic sites, to gain knowledge and expertise in archaeology. Two Canadian landscape architects were among the finalists. The participants paid their own travel costs, while the rest of the program for the Canadians involved was funded by the Canadian Commission of UNESCO.

From 3-30 September past, ten conservation-minded persons (the majority of whom were students of the discipline) from decidedly different homelands (Poland, Soviet Georgia, Finland, Israel, Thailand, Canada) gathered at the town of Montagny-les-

Monts near the City of Fribourg in the Swiss Mittelland. Here the group began a lively discourse and commenced strenuous labour, under the inspired leadership of Carmen Buchiller of the Archaeological Service.

The Château de Montagny had its origins in 1146 and, up until the mid-nineteenth century, found its stewardship passed from count to count. It withstood many hostile attacks as it occupied an important place in a tumultuous region of Europe. A period of respite and subsequent neglect was followed by its purchase in 1860 by a local military figure. Its physical decline unfortunately continued. The removal of the structures' stones — highly valued by local farmers — has resulted today in a site characterized simply by a few walls and tower.

The most prominent aspect of the site has always been its cylindrical tower (harbouring a dungeon) measuring 23 metres from foot to (previously) peaked top. Set on one of the region's highest points, it has stood as the symbol for the community of Montagny for many centuries. Even as late as the end of the eighteenth century, the site was still viable, boasting residential, judicial, protective and spiritual quarters, the latter represented by a chapel dating to the earliest evidence of habitation on the site.

The UNESCO group was involved in the "rediscovery" of this complex, which, while not considered a particularly formal 'dig,' will allow for future detailed and meticulous measurements. Clearing of accumulated soil and vegetation and the exposure of the

complex's four walls were the main tasks. Recording these elements and the various found artifacts (glass, iron nails, ceramic tiles, etc.) aided in crystallizing the recounted history. The work was physically demanding but incredibly rewarding, especially since the group was instrumental in rejuvenating a very important historical and cultural symbol for the community of Montagny.

Before the group's departure, a contract was signed by local and cantonal political figures which, for the time being at least, ensured the continued safeguarding, rediscovery and intended reconstruction of Château de Montagny. The group could leave Montagny and the Canton of Fribourg safe in the knowledge that their efforts have provided a strong starting point for a formidable, though highly credible and laudable venture.

The trip for the Canadians involved was organized through the kind cooperation of Linda Allain, Programme Officer, Youth, Canadian Commission for UNESCO, 99 Metcalfe St., Box 1047, Ottawa, Ont. K1P 5V8 (613-598-4325), and through Linda Fardin, Vice-president, ICOMOS Canada. Contact: Secrétariat de la Commission Nationale Suisse pour l'UNESCO, Eigerstrasse 71, 3003 Berne 8, Switzerland (tel. 031/61-35-50).

John E. Zvonar, Participant

---

## Current Research

---

Harold E. Wright, President, Museums New Brunswick Inc., has identified the photo we ran in *Pollen*, Vol. 1, No. 3, of the New Brunswick landscape illustrating the Rural Conservation article. Mr. Wright writes that it is a photograph of St. Basil on the Saint John River, c. 1900.

## Bellevue House National Historic Park, Kingston

Colin Beckingham, Head Gardener at Bellevue House NHP, Kingston, Ontario has begun a research project to help create varied plant displays. The composition of these displays is constrained by the historic nature of the site. Over the past year he has been building a database on his home computer which contains information relating to plants — Latin and com-

mon name, descriptive details, etc. — and has lately added a “date” field to the database. “Date less than X” has been added to filter out plant materials relevant to a particular historic site. Each time a date is added, the source of the information is recorded as well. The “date” field will show the earliest date found for each plant.

Each year the Bellevue gardens have five or so serious challenges to the selection of varieties or species which Beckingham must justify. He hopes that the database will not only streamline this process, but also enable Bellevue to act as a resource base for this kind of information.

The database now has over 2600 species, about 200 of which have a “date” field less than 1850. Beckingham would be interested to hear of any database projects of this kind — he would like to compare notes. He can be reached at Bellevue House N.H.S., 35 Centre Street, Kingston, Ontario, K7L 4E5 (613) 545-8666.

---

## Technical Information

---

### “Iron Fences” — At a Glance

There is a “potential” in that somewhat forlorn iron fence at the bottom of the garden. To restore it to its former elegance, however, some investigative work is required.

The first most important step is to identify the materials used in the construction of the iron fence. Is it wrought

(hand-worked) iron or cast iron? Is it “wrought iron” in the old sense which is truly iron, or today’s version, which is really hand-worked mild steel? The wrought designation has remained but the materials have changed.

Wrought iron cannot always be recognized by its shaping and the hand hammering marks visible on the finished product. A common belief held by modern trades people is that all wrought iron should look beat-up. Today’s mild steel is usually hammered to appear old. If authentic, the tool marks, combined with traditional joinery methods used for centuries, makes wrought iron a distinctive material. Component pieces are usually forge welded (joined together by heat and hammered into one), but pieces can also be riveted together, mortise and tenoned, or bound together by collaring.

Mild steel, which has a higher carbon content than iron, is now normally electrically welded rather than forge welded, but also is joined by the traditional methods, thus further confusing the identification of the material. Mild steel is more susceptible to corrosion than iron and therefore a secure paint finish is critical.

Cast iron, a commercial alloy of iron and carbon with silicon and other elements, is a very brittle material once it is cast, in contrast to the malleable properties of wrought iron and mild steel. The material is difficult to weld and is usually riveted in place. However, it is relatively inexpensive to produce component parts once the necessary patterns have been made. Since cast iron is formed in a mold, an

almost infinite variety of decorative sculptural reliefs are possible. Using a good quality pattern (wood, plastic or metal) a high number of identical castings can be made.

A further in-depth analysis of the material is also necessary and will yield important information. A piece of the fence must have a sample cut from it, for identification. Polishing, then etching the cross-section surface of the sample, will better reveal the internal grain structure of the metal. Further microscopic examination will help positive identification of the material.

Identifying the actual material of your iron fence allows further determination of methods of disassembly (if necessary for restoration) and repair. It also permits an accurate choice of surface preparations and finishes for the fence.

Achim Jankowski and Alex Barbour

---

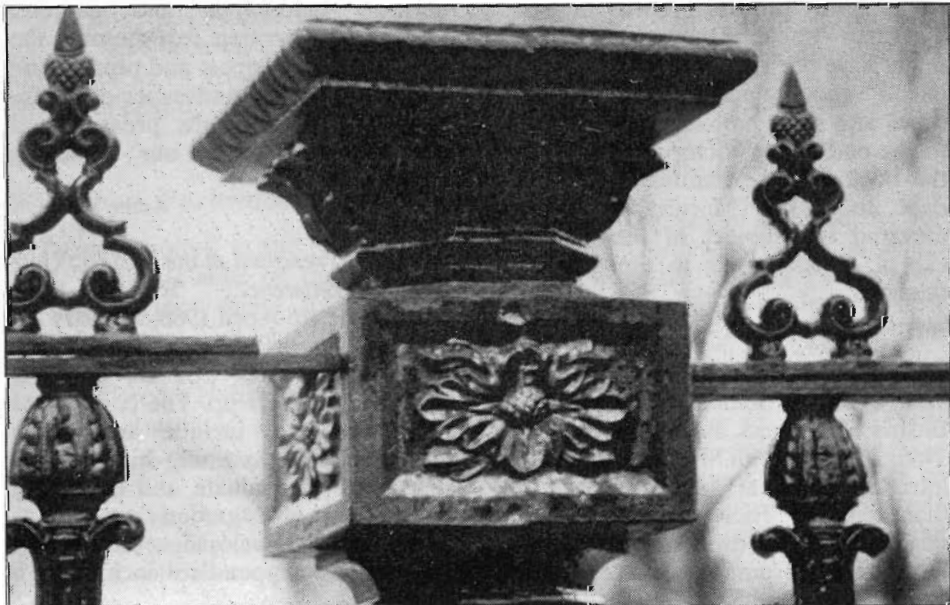
## Exhibits

---

### Heritage Bulbs at Montréal Botanic Gardens

In September some of the oldest varieties of bulbs, called the “Heritage Bulb Series”, were planted at the Montréal Botanic Gardens. Botanix Garden Centres donated these bulbs to the Gardens in order to draw the attention of the general public to the International Week of Flowering Bulbs (September 16-23).

The Botanix flower bed is composed of many varieties of Heritage bulbs: Parrot tulips, Keizerskroon — a single, early tulip — two types of *Fritillaria imperialis* — *rubrum maximum* and the rare *aurea marginata* as well as *F. meleagris*. Alliums such as *A. karataviense*, *moly*, and *roseum* were also planted. Visitors to the Gardens next spring will also see old, yet commonly available varieties such as *Bulbocodium vernum*, *Muscari botroiydes*, *Galanthus nivalis*, etc. In addition three older varieties of crocus including *C. purpureus* ‘Grandiflorus’ will bloom in this bed. *Hyacinthus orientalis*, also planted in the Botanix bed, is the original botanical form of the hyacinth which has been cultivated for more than 400 years. Information on this exhibit was obtained from *Québec Vert*, October 1989, p. 20.



---



---

## Publications

---



---

**Boulanger-Francais, Jacques,** *Parcs et Jardins de Bruxelles*, is scheduled to appear at the end of 1989. It is a government publication designed to involve the citizens of Brussels in understanding the necessity for green space conservation, the tensions with development and the possibilities of green space use. One hundred parks and gardens will be covered in the book and lavishly illustrated with maps, plans, charts and photographs. The history of major sites and their technical details will also be included. As well, a major project – the creation of a new, connecting parkway encircling the entire city – will be described. Information on the book can be obtained from: Ministère de la Région Bruxelloise, Administration de l'Urbanisme et de l'Aménagement du Territoire, 49, rue de Trèves - 1040 Bruxelles, Belgium.

“Historic Gardens in Japan,” a paper prepared for ICOMOS by the Japanese Institute of Landscape Architects, 1989, 31 pp. This paper contains information on ten heritage gardens in Nara City, Iwate, Kyoto and Tokyo. Short descriptions are accompanied by photographs and site plans of each garden. A copy of this paper can be obtained by sending \$6 to L. Fardin, Chairman, Historic Gardens and Landscapes Committee, ICOMOS Canada, P.O. Box 737, Station B, Ottawa, Ont. K1P 5R4.

**Logan, William Bryant,** *The Gardener's Book of Sources*, Penguin Books, New York, 1988, 271 pp., illus. CAN \$17.95. Logan has compiled an amazingly comprehensive source list of books, periodicals, catalogues, nurseries, societies, tools and supplies, furniture and ornaments. It is mainly written for the American gardener, but there are Canadian and European inclusions as well. For gardeners interested in heirloom material, Logan has sections on heritage vegetables, fruit trees, roses, and an abbreviated bibliography of garden and landscape design history. All of his selections, whether nurseries or flower pot suppliers, are given critical and explanatory comment.

**Looker, Michael and John Patrick,** *Understanding and Maintaining Your Historic Garden*, Ministry for Planning and Environment and the Historic Buildings Council, Victoria, Australia, n.d., 18 pp. This handsome booklet condenses the whys and hows of garden restoration into a small pamphlet. The reader is given a list of pertinent sources and the addresses of libraries and archives in Australia where reference material is to be found. The authors outline the basics of site analysis and interpretation. Planting styles, a list of known cultivated plants, and descriptions of typical heritage garden structures further aid the efforts of garden restorers. This type of helpful booklet would be beneficial for many Canadian communities.

**Martin, Tovah,** *Once Upon a Windowsill: A History of Indoor Plants*, Timber Press, Portland, Oregon, 1988, 303 pp., illus. US \$29.95. Tovah Martin's book is a welcome and abundant source of information for any curator involved in the interpretation or restoration of the interior of 19th century North American dwellings. The book deals with the use of indoor plants in the United States from the 1830s onward. It is illustrated with several engravings. The book might have benefitted from period photographs or contemporary photographs illustrating restored interiors. The text deals very well with the subject from a social, historical as well as horticultural perspective. It includes some plant lists, for example, an 1881 list of flowering tropicals grown on windowsills, and a circa 1881 list of ferns and palms grown in the Victorian home. One wishes there might have been a few more lists referenced geographically, and broken down into short periods from the start to the end of the Victorian era. While the book is not exhaustive, we are in debt to Tovah Martin for having elevated the subject of the historic use of indoor plants to the status it deserves.

Linda Fardin

**Martin, Virgil,** *Changing Landscapes of Southern Ontario*, The Boston Mills Press, Boston Mills, Ont., 1988, 243 pp. Virgil Martin presents an intriguing look at southern Ontario, then and now. There are ten chapters dealing with a diversity of subject headings – from agriculture, towns

and cities, to special places and future landscapes. The concept of landscape, as described in Chapter 1, rests on a dual foundation – one part physical, the other part psychological. The various chapters present historic photographs paired with modern counterparts taken from the same viewpoint. The author has gone to considerable trouble to duplicate the lighting conditions and siting of the original photograph. Accompanying each pair of photographs is a clear explanatory note describing the essence of the author's concerns. An appendix summarizes some of the more technical aspects of the rephotography process.

This deceptively simple approach presents a chronicle of the changes in southern Ontario landscapes, sometimes small, sometimes striking. In documenting the changed physical landscape, the book also reveals the changing culture that created it.

Some major alterations are evident such as a deep rutted winding road transformed into a multi-laned highway. That the car now dominates the landscape is evident in many photos. The predominantly rural pictures also reveal declining agricultural land use, overgrowth of natural vegetation and encroaching urban sprawl.

While at first glance the book seems somewhat repetitive, a more in-depth review reveals the intricate complexities of our cultural landscape. The challenge to the reader is finding some trace of the historic landscape within the new. The process of rephotography of old scenes also indicates a valuable tool for the study of heritage landscapes and gardens. Overall, the written text heralds the landscapes of the past and present and speculates on the landscapes of the future. The photographs present food for thought about our changing landscapes.

Achim Jankowski

*Papers Presented at the Historic Gardens Conference, 'Ripon Lee,' Melbourne, 16 April 1986, Ministry for Planning and Environment and the Historic Buildings Council, Victoria, Australia, n.d., 87 pp.* The contents of this publication include articles on identifying and assessing historic gardens, how to evaluate and develop a master plan for garden restorations and current development in garden restorations. Appendices include 19th

century plant lists and a short bibliography of Australian horticultural literature. The Australian experience is an interesting contrast to Canada's Victorian horticultural history.

**Stilgoe, John R.,** *Borderland: Origins of the American Suburb, 1820 - 1939*, Yale University Press, New Haven, 1988, 353 pp., 187 illus. US \$35. John Stilgoe's most recent book is a lively account of the formation of the pre-World War II American suburb. He does not examine the financial details of this phenomenon, the history of domestic architecture, the sociological impact, the ethnic and religious composition of the new settlements, nor the connection to the back-to-the-land movement. As befitting the Harvard professor of visual and environmental studies and the history of landscape, Stilgoe details the development of the nascent suburb from a landscape perspective.

Borderland was the land between two extremes — the industrial city and the agricultural countryside. The ideal landscape promoted by borderland enthusiasts was not wilderness, nor completely pastoral: it was on the edge of both, the semi-tamed edge of meadow and forest. Early advocates of borderland living were interested in creating and enhancing picturesque scenery, rather than completely taming the wilderness and forcing it into formal patterns and layouts. They definitely did not wish to merge into the rural world of farming, agriculture and village life. That way of life was disparaged as harsh, unsophisticated, even backward.

Stilgoe details how and why these 19th century pioneers set about changing their landscape. The British model on each end of the spectrum, from rose-embowered cottages to landscaped estates, greatly influenced the horticultural aesthetic of borderland dwellers.

The 120 years of suburban history which John Stilgoe recounts so ably reflects the concerns and fashions of late 19th and early 20th century American life. He has provided a stimulating jumping off place for further studies, as well as a partial explanation of modern American definitions of the good life.

Edwinna von Baeyer

**Stokes, Samuel N., A. Elizabeth Watson, Genevieve P. Keller, and J. Timothy Keller,** *Saving America's Countryside: A Guide to Rural Conservation*, The Johns Hopkins University Press, Baltimore, Maryland, 1989, 320 pages. US \$16.95 paperback, \$42.50 hardcover. *Saving America's Countryside* is sponsored by the National Trust for Historic Preservation as part of its rural program. It is not only a handy reference and "how-to" manual, but also a thoroughly documented textbook. The book shows in detail how to organize a conservation effort, inventory available resources, work for effective new laws, set up land trusts, take advantage of federal programs, and raise public consciousness.

## Quest for information

### Vancouver Trees

Patrick Mooney, Assistant Professor of Landscape Architecture at the University of British Columbia is interested in receiving guidelines, by-laws, or suggestions to help a Vancouver group save threatened city trees. Some members of the British Columbia Society of Landscape Architects have joined with a local homeowner's association to stop the loss of city trees due to the pressures of development. Contact him at the Department of Plant Science, Suite 248-2357 Main Mall, Univ. of B.C., Vancouver V6T 2A2. (604) 228-4384.

### Uncle Tom's Cabin Orchard

Arthur Pegg, County of Kent Historic Advisor and Director of Uncle Tom's Cabin Historic Site, requests information on 19th century apple orchards. Uncle Tom's Cabin Historic Site, a four-acre parcel, is located in Dresden, Ontario between London and Windsor. It is sited on part of the original 200 acres purchased in 1841 to establish a refuge for fugitives from American slavery. Josiah Henson escaped in 1830 to Canada from Maryland. He was interviewed by Harriet Beecher Stowe and narrated his life experiences to her. After publishing her novel, *Uncle Tom's Cabin*, Henson became synonymous with the central character, Uncle Tom.

# POLLEN

*Pollen* is a publication of ICOMOS Canada's Historic Gardens and Landscapes Committee and is produced three times a year.

Publication of *Pollen* has been made possible through the support of ICOMOS Canada and Heritage Canada, its board of governors, and particularly its executive director, Jacques Dalibard who generously provided space, secretarial and financial aid for the venture.

*Pollen*, une publication du Comité des jardins et paysages historiques d'ICOMOS Canada, paraît trois fois par an.

La publication de *Pollen* est possible grâce à l'appui d'ICOMOS Canada et d'Heritage Canada, de son conseil d'administration et particulièrement de son Directeur général Jacques Dalibard, qui fournit gracieusement les locaux, les services de secrétariat, et l'aide financière nécessaires à sa production.

Editors/Rédactrices:  
Edwinna von Baeyer  
Linda Fardin

Production: Heather Morin

Send contributions to:/Envoyez vos articles à:  
E. von Baeyer  
131 Sunnyside Avenue  
Ottawa, Ontario K1S 0R2

Mailing Address:/Adresse:  
POLLEN  
ICOMOS Canada  
P.O. Box 737, Station B  
Ottawa, Ontario K1P 5R4

ISSN 0840-9218

A nineteenth century bird's eye view perspective of the grounds depicts fields, river activities, and orchards. The present site does contain an apple orchard that may be the remnants of the orchard portrayed in this drawing. Mr. Pegg would like to investigate the age of this orchard. If anyone has information on how to proceed in this phase of rural conservation, please contact Arthur Pegg, Kent County Municipal Building, 435 Grand Ave. West, Chatham, Ont. N7M 5L8. (519) 351-1010.



## Museum and Site News

### Joseph Schneider Haus, Kitchener, Ontario

The Joseph Schneider Haus in Kitchener, Ontario has been restored to the year 1856. The site supports a traditional four square kitchen garden with raised beds, surrounded by a whitewashed picket fence. The vegetables are grown from heritage seed varieties obtained from Cornell University. Seeds were saved from the produce to the extent that the site could sponsor a seed exchange last May. Saving seeds was an essential part of food production for early Mennonite settlers in this area. This thriftiness was due not only to a dearth of seed sellers at that time, but also due to the Mennonite belief in self-sufficiency. Planting was often ruled by astrological signs and auspicious days – for example cabbage was always planted on St. Gertraut's day, March 17. This information was taken from: "Traditional Four Square Garden at Joseph Schneider Haus," Maria Hollands, *Heritage Seed Program*, August 1989, pp. 9-11. For more information, contact: Joseph Schneider Haus, 466 Queen Street South, Kitchener, Ontario, N2G 1W7. (519) 742-7752.

## Heritage Plants

Lilac – *Syringa vulgaris*. This is a shrub so well-known in Canada and used so widely that many think it is indigenous to this country. The lilac was a hardy traveller, however, first entering Europe in 1562 from the Near East, hopping across the Channel, establishing itself in England by 1692, and then coming to the New World in settlers' baggage.

The lilac (or laylock as it was called in Upper Canada) was an established shrub in our early pioneer gardens. Usually planted in the front garden or by the door-step, it was well-loved for its fragrance and early blooming. The earliest mention of it in commercial



distribution in Upper Canada was in William Custead's 1827 *Catalogue of Fruit & Ornamental Trees, Flowering Shrubs, etc.* By 1872, D.W. Beadle in his *Canadian Fruit, Flower, and Kitchen Garden* could remark: "These are well-known hardy shrubs, which grow well everywhere, in every soil, and all exposures. They have become so generally diffused that they are hardly held now in the estimation which they really deserve."

The majority of lilacs can withstand temperatures of -47° C and still flower in May and June. They are large, vigorous, coarse-textured shrubs with heart-shaped leaves borne in opposite pairs. Most lilacs grow between 8 and 12 feet (2.5 to 3.5 m) tall. Clusters of small tubular, four-petalled, fragrant flowers are found in pinks, purples and white. They prefer to be planted in sunny locations and, as D.W. Beadle remarked, will grow in almost any soil. However, they will thrive in rich, moist and loamy soils and flower best when watered adequately during the growing season. The only pruning necessary is the removal of the dead flower clusters back to the first bud on the stem. To control growth and shape, remove all suckers arising from the base of the plant.

There are numerous varieties. Often designated as French Hybrid Lilacs, they are grafted onto hardy rootstocks – usually non-suckering. The Central Experimental Farm, Ottawa and the Royal Botanical Gardens, Hamilton cultivate the most comprehensive collections of these shrubs in Canada.

Edwinna von Baeyer

I would like to join ICOMOS Canada and receive *POLLEN*, the Historic Gardens and Landscapes Committee's (HGLC) publication, produced three times a year. I have enclosed \$25.00 (Cdn.) which entitles me to all ICOMOS Canada and HGLC annual membership, benefits and publications. (Make cheques payable to ICOMOS Canada and send to Linda Fardin, Chairman, Historic Gardens and Landscapes Committee, ICOMOS Canada, PO Box 737, Station B, Ottawa, Ontario K1P 5R4.)

Je désire devenir membre d'ICOMOS Canada et recevoir *POLLEN*, la publication du Comité des jardins et paysages historiques (CJPH), publié trois fois par an. J'envoie ci-joint ma cotisation annuelle de 25 \$ Can., qui me permettra de bénéficier de tous les avantages et publications d'ICOMOS Canada et de CJPH. (Établir les chèques à l'ordre d'ICOMOS Canada et envoyer à Linda Fardin, Présidente, Comité des jardins et paysages historiques, ICOMOS Canada, C.P. 737, Succursale B, Ottawa (Ontario) K1P 5R4.)

Name/Nom \_\_\_\_\_ Occupation/Profession \_\_\_\_\_

Address/Adresse \_\_\_\_\_

City/Ville \_\_\_\_\_ Province/Province \_\_\_\_\_

Postal Code/Code postal \_\_\_\_\_ Country/Pays \_\_\_\_\_ Tel. \_\_\_\_\_

I am already a member of ICOMOS Canada and I would like to receive *POLLEN*. I have enclosed \$5.00 (Cdn.) for a yearly subscription to *POLLEN*.  
Je suis déjà membre d'ICOMOS Canada et je désire recevoir *POLLEN*. J'envoie 5 \$ pour une cotisation annuelle à *POLLEN*.