

6. Outline of Management

Investment costs

Investment costs include the following: investment for the preservation and restoration of ancient structures, 127.78 million baht (58 per cent); tourist promotion investment (government), 73.23 million baht (33 per cent); and village resettlement and renewal investment, 18.59 million baht (9 per cent); making a total of 220.60 million baht.

Private investment in hotel construction totals 30.00 million baht, and public (government) and private investment combined 250.60 million baht.

Sources of investment funds are: (a) government funds, about 70 per cent (154 million baht); (b) donations from abroad, about 20 per cent (44 million baht); and (c) donations from local sources, about 10 per cent (22 million baht); making a total of 220.60 million baht.

The regular yearly expenses of approximately 4.95 million baht can be partly obtained from admission tickets; about 256,000 people visit Sukhothai each year. If each person is charged 5 baht for admission into various sites, about 1.25 million baht can be raised for the project. The remaining 3.75 million baht can be obtained from government funds.

Project administration

The overall project should be under the direct control of the Fine Arts De-

partment as most of the work involves archaeology and Thai culture. Since the Fine Arts Department is under the authority of the Education Ministry, the education minister should act as president of the committee, with the Fine Arts Director-General as vice-president and executive secretary. Co-ordination amongst all committee members (composed of high-level government officials from various government departments) is essential.

Management

Construction in the area of the historical park requires the co-ordination of the Fine Arts Department and other government agencies (e.g. the Highway, Irrigation, Forestry and Land Departments), as well as private construction firms and a working force of local labourers.

The project staff should be composed of the following persons: project director; project manager; head architect, head of archaeology and excavation team, and head engineer. After the completion of the project, the Sukhothai Historical Park should be managed by the following persons: a project manager (an official from the Fine Arts Department), an archaeologist, a maintenance manager; and an expert in agriculture.

Police headquarters and an information centre should be set up within the

Historical Park to provide assistance for visitors.

The operation staff of the Sukhothai Historical Park Development Project is as follows: Dejo Savanananda, project director; Nikom Musigakama, project manager; Maneerat Thuamcharoen, deputy project manager and head of documentation division; Nalinee Bunpan, co-ordinator; Prachot Sangkhanukit, head of maintenance division; Vira Rojpojchanarat, project architect and head of physical planning division; Borvornvet Rungruji, head of techno-archaeology division; Chamaiporn Podhipak, architect and planner; Pracha Suvansom, surveyor; and Boonsup Sithongkham, technician.

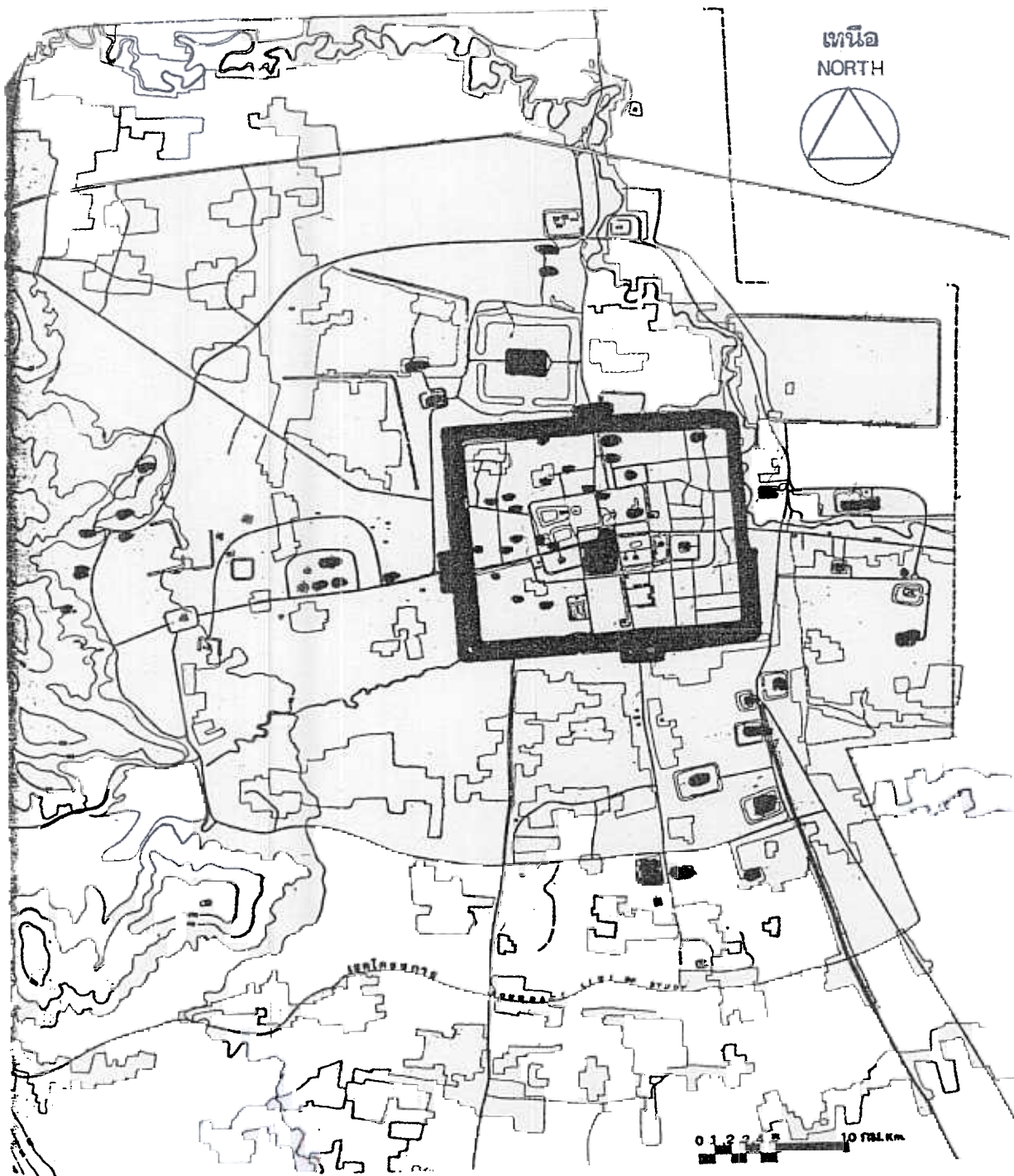
The editing team comprises: Vichanee Bunnag and Vira Rojpojchanarat, technical staff; Promporn Pramualratana, translator; and Maneerat Thuamcharoen, editor.

The authors are responsible for the choice and the presentation of the facts contained in this book* and for the opinions expressed therein, which are not necessarily those of Unesco and do not commit the Organisation.

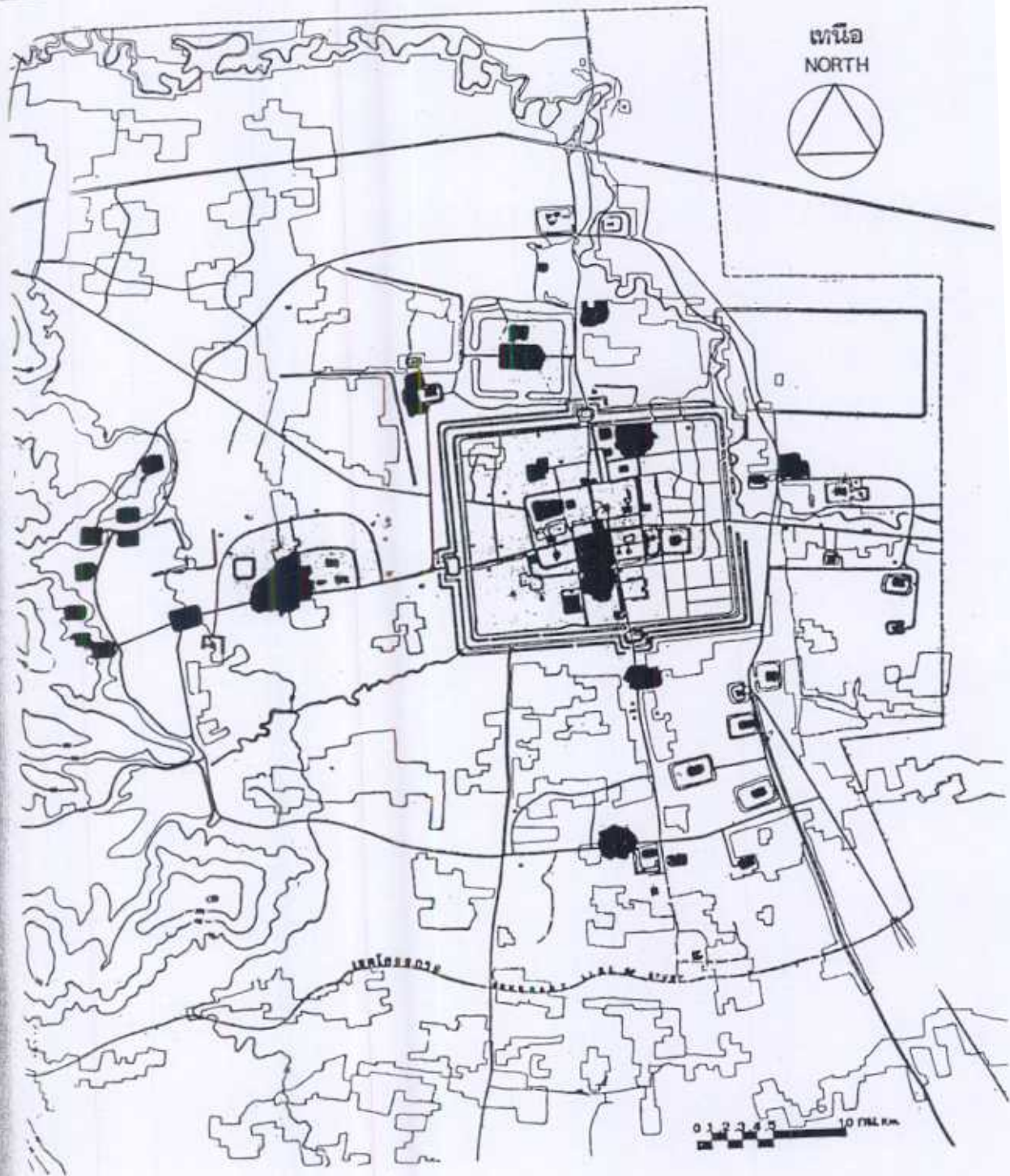
The designations employed and the presentation of material through this publication do not imply the expression of any opinion whatsoever on the part of Unesco concerning the legal status of any country, territory, city or area or of its authorities, or concerning the delimitation of its frontiers or boundaries.

Published in 1982 by the United Nations
Educational, Scientific and Cultural Organization
7 place de Fontenoy, 75700 Paris
Printed by Imprimerie Courvoisier SA, La Chaux-de-Fonds

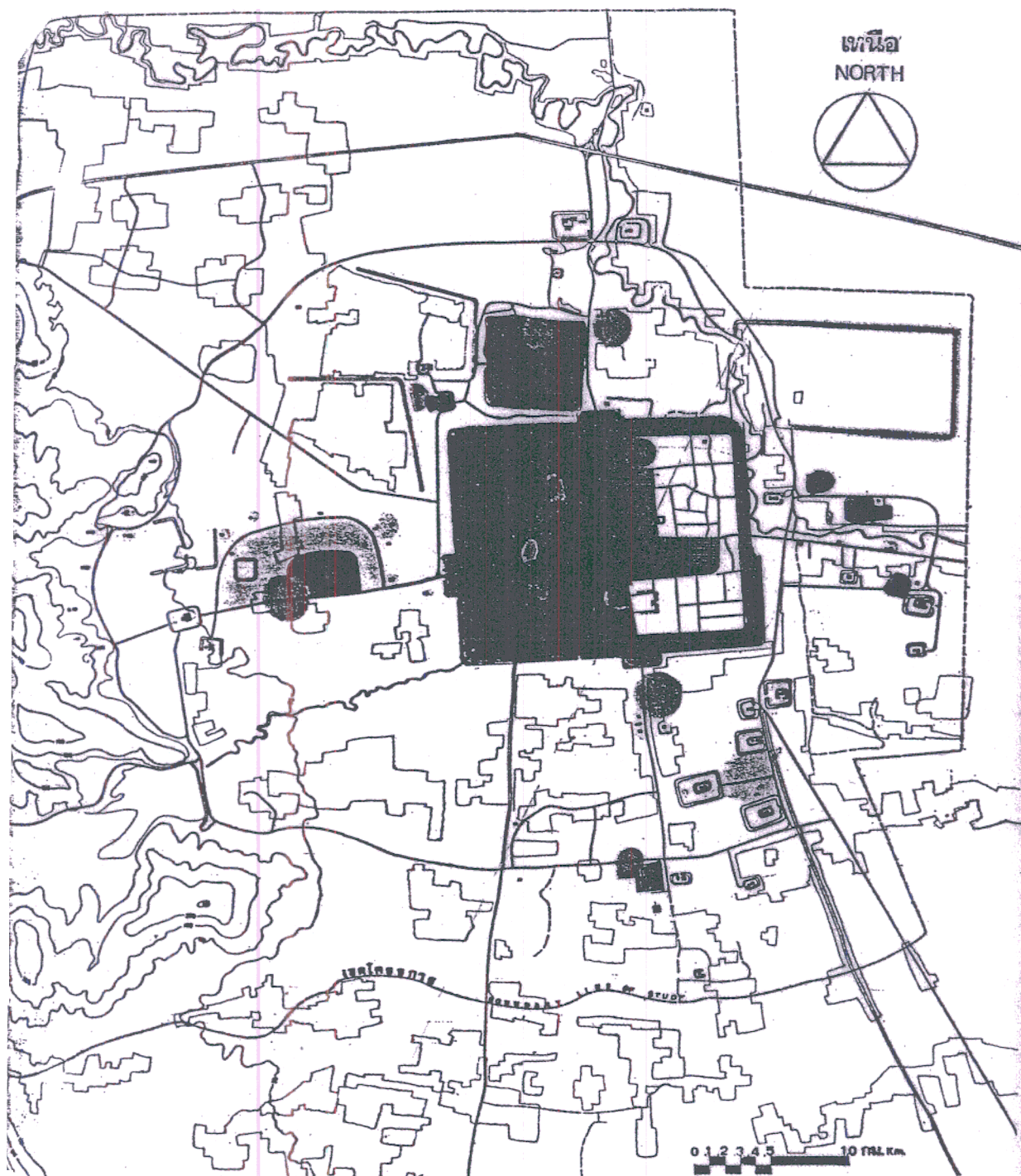
* Sukhothai Historical Park Development Project: Master Plan



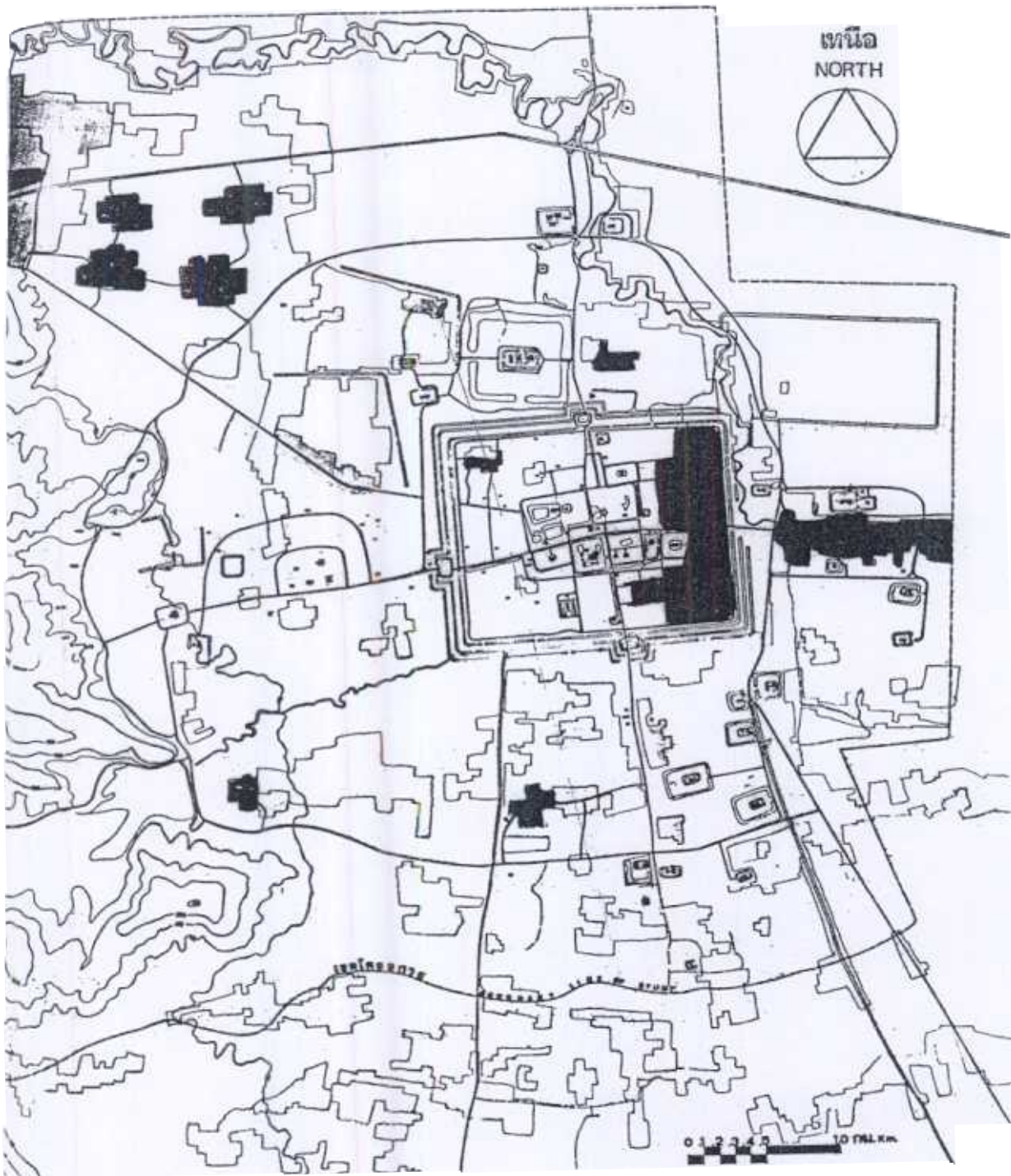
Restoration plan



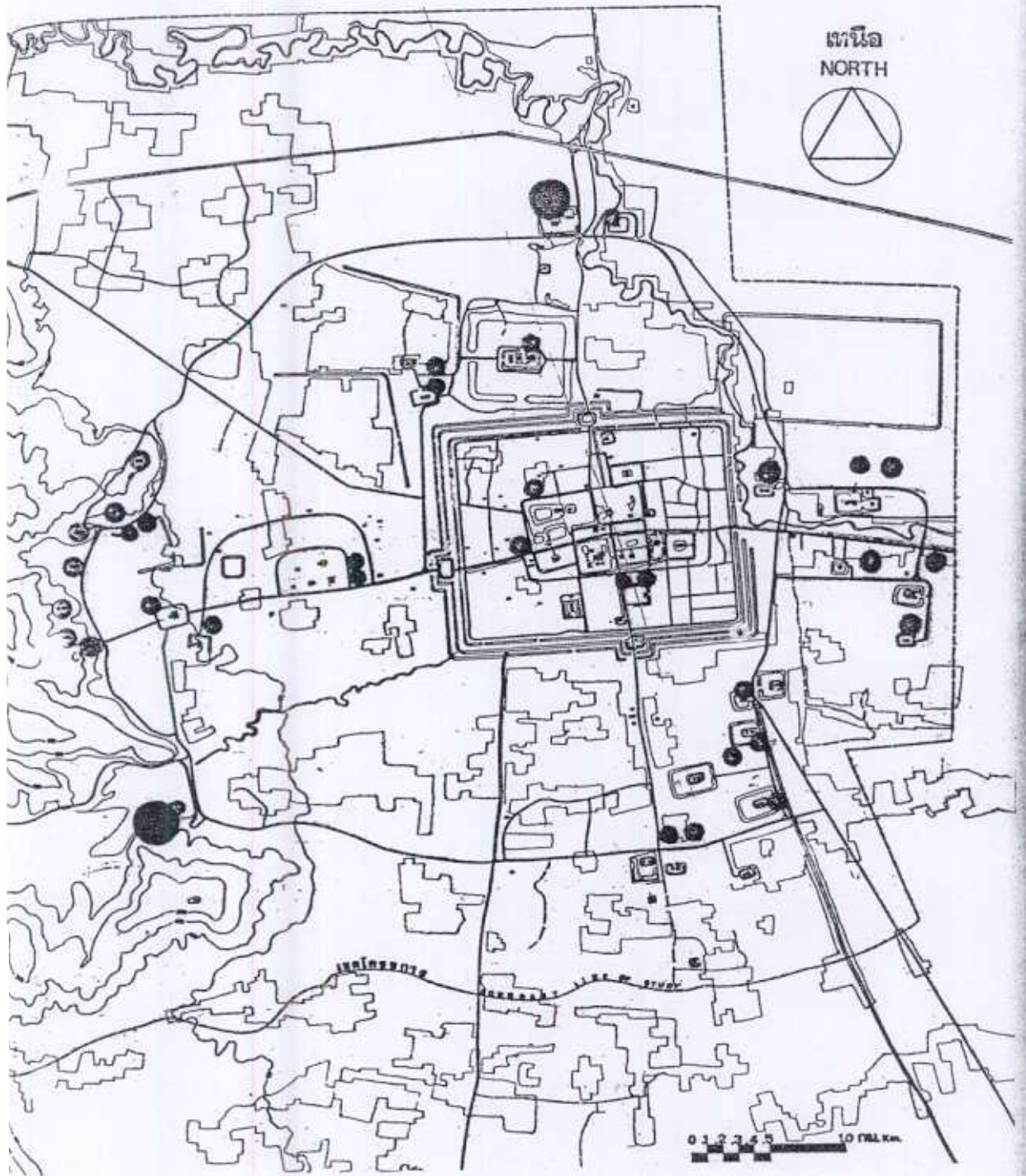
Landscape plan



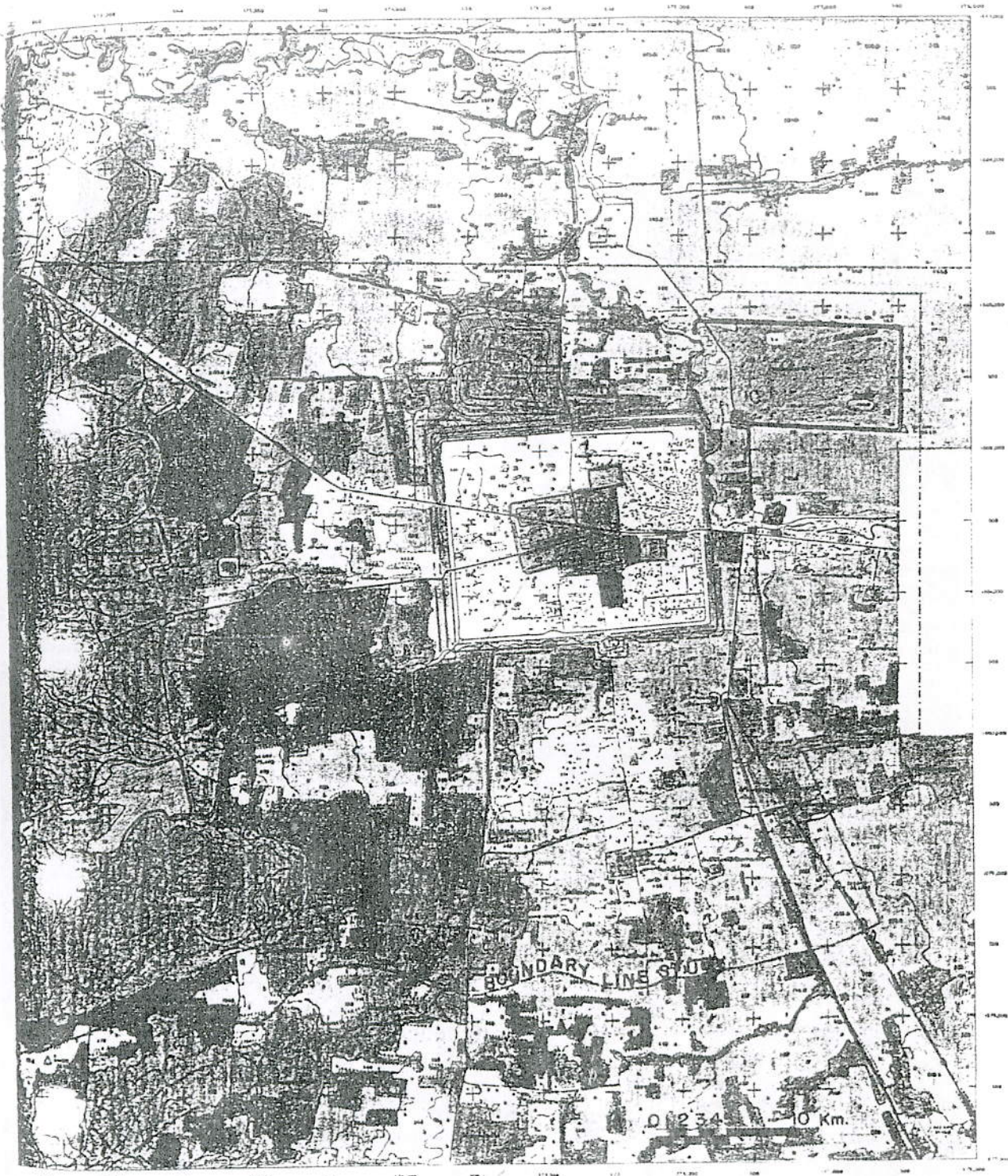
Landsc opri la.



Communities plan



Tourism plan



Existing land use

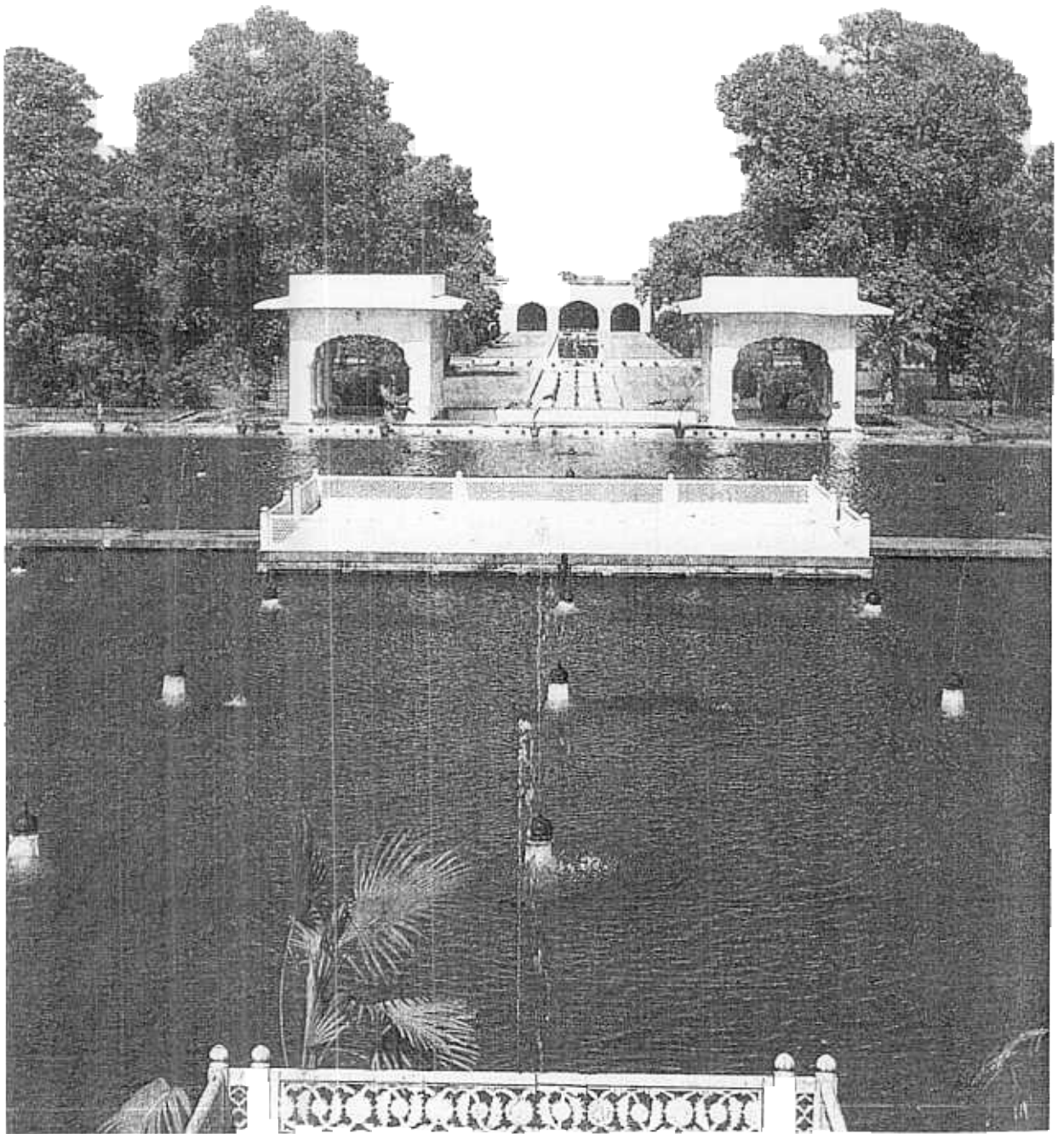


Fig. 1 . Middle and lowest terrace of Shalamar Garden.