
**Shalamar Garden
Preservation and Restoration
Master Plan**

**Department of Archaeology
Government of Pakistan 1973.**

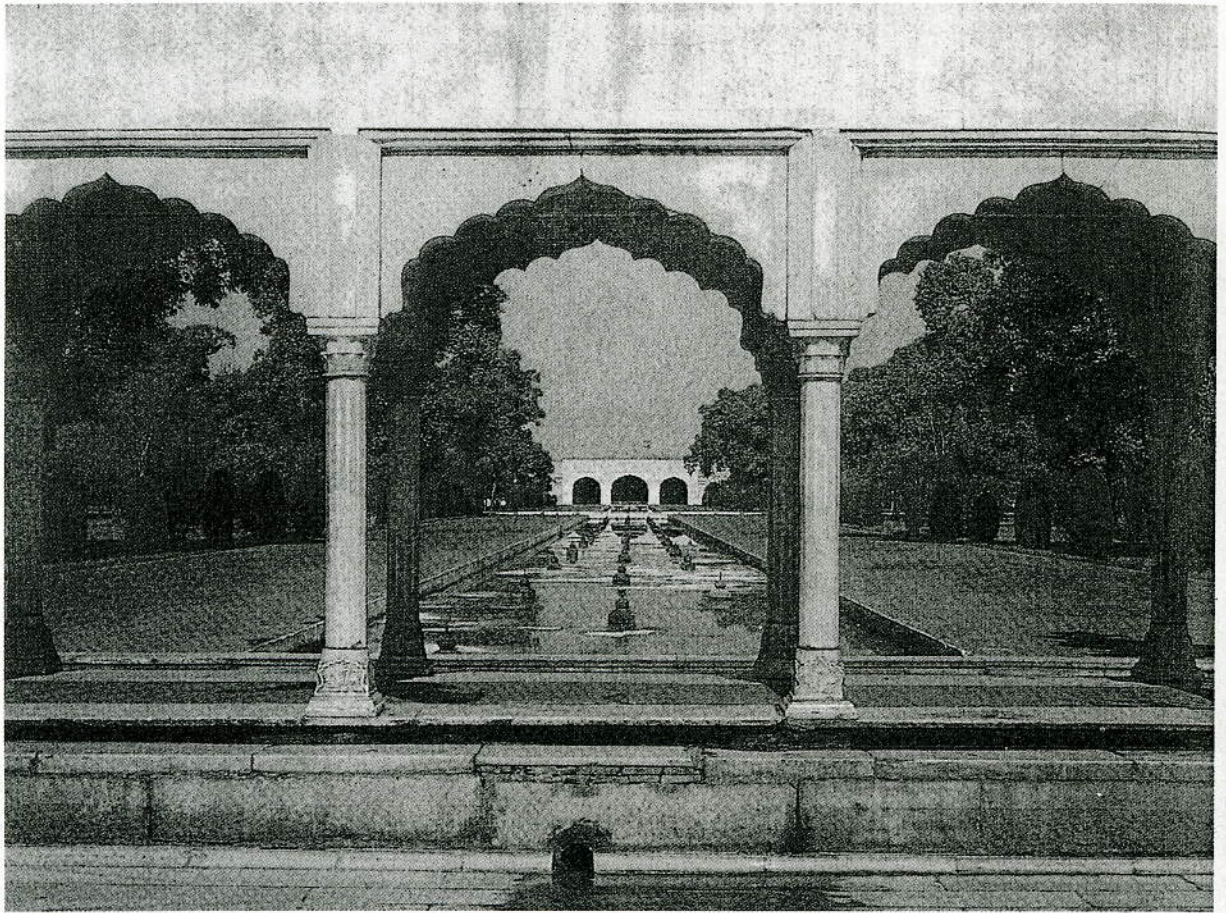


Fig 2. Main water axis on the lower terrace from the Sawanbhadon.

Contents

1. **Introduction**
2. **Buildings of the Garden**
3. **The Surroundings** 207
4. **Measures for Preservation and Restoration**
5. **Improvement of Gardens** 216
6. **Acquisition of Land and Illumination**
7. **Abstract of Cost.**